

Adjustable legs instruction manual for the Hunter's pod

Content:

- 1- Introduction.
- 2- A word on safety
- 3- How to install the adjustable legs.
- 4- How to operate the adjustable legs.
- 5- Warranty and disclaimer.

1- Introduction



Thank you for your purchase, this tool is very sturdy and durable but one needs to follow these simple instructions. The adjustable legs are meant to be used with the Hunter's pod. They can extend the leg from 0 to 4 1/2 feet in increment of 6 inches. The foot of the adjustable leg is a plate of 4 inch by 4 inch. The adjustable legs allow to use the tripod on an uneven ground. They also allow to lift larger load (not heavier,) because being taller, the pod can have its feet more spread apart. Another advantage of these legs is to erect it and take it down easier.

The adjustable leg is meant to be installed outside of a 1 1/2 inch square tube. They are meant to be used on square steel or aluminum tubing with rounded hedges. The maximum weight to be lifted is 1000 pounds. The thickness of the steel is either .125" or .100". If using aluminum do not use less than 188". The legs are not painted but can be painted only on the outside. I do not recommend to paint the part of the tube that slide into the adjustable legs. The Hunter's Pod with adjustable legs should not be left to the elements for a significant amount of time as the inside is not painted and the water will penetrate in them.

2- A word on safety

This tool is dangerous like any other tools. The Hunter's pod equipped with adjustable legs is remarkably heavier than without the adjustable legs. In order to save your back, it is very easy to undo the legs and carry it over a long distance piece by piece. Just like any tripod, no one is allowed to stand under the load being lifted. Nobody should be around when it is moved. In order to move it, displace one leg at

a time, only one person should move it. Displace one leg only a short distance and then move the two other legs. If you do to big a step, the tripod might lose it's balance and become a hazard. The load being lifted should be about in the center of the three legs. Do not use it on ice or on a slick surface as the feet can slide apart. Do not lift more than 1000 pounds with it. Do not use this tool if overly tired, or under the influence of any substance. Gloves are highly recommanded as there is a pinching point between the leg and the adjustable leg.

3- How to install the adjustable legs

When you receive the legs make sure they have not been bent, they are very strong to support an axial load but not a side load. These are the tool you will need to install them:

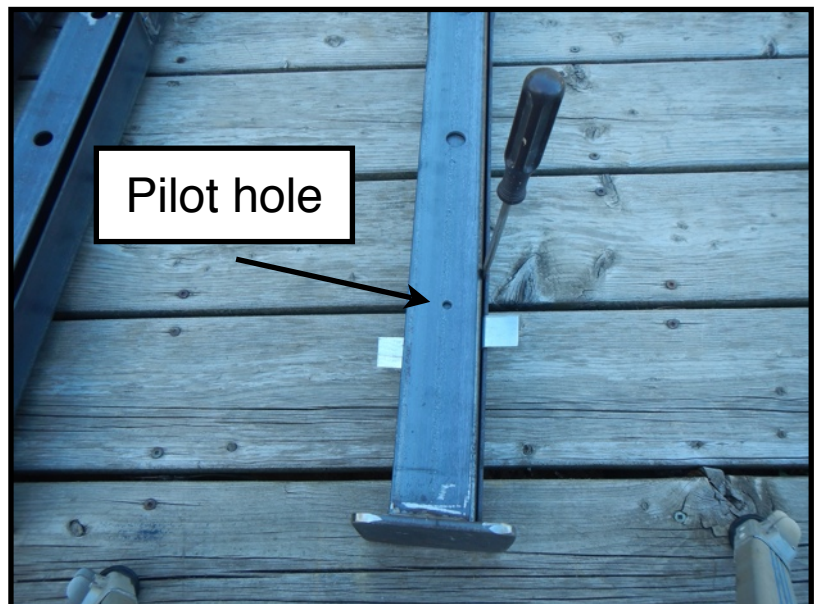
- A support system (work horse type of thing).
- A drill with a 1/4" and 1/2" drill bit.

This is what comes with them: 3 legs, 3 pins with "R" pins and 2 shims of 0.030".

First thing to do is to verify that the 1 1/2" tube goes into the adjustable leg easily. If it does not, rotate the tube and try again. If there still friction you will need to grind the tube slightly so that it slides in easily. When this part is done, install the tube all the way to the foot of the adjustable leg. Each leg has a 1/4" pilot hole. The supplied shims are to be install on each side of the pilot hole as in the picture. You may need a flat screwdriver to install the shims.

Using a 1/4" drill bit, drill the tubing on both sides using the pilot hole as a template. Remove the tube from the leg and drill a 1/2" hole in the hole you just drilled. You can now drill also the pilot hole in the adjustable leg with the 1/2" drill bit.

Repeat this operation on all three legs and tubing using the shims the same way. The shims



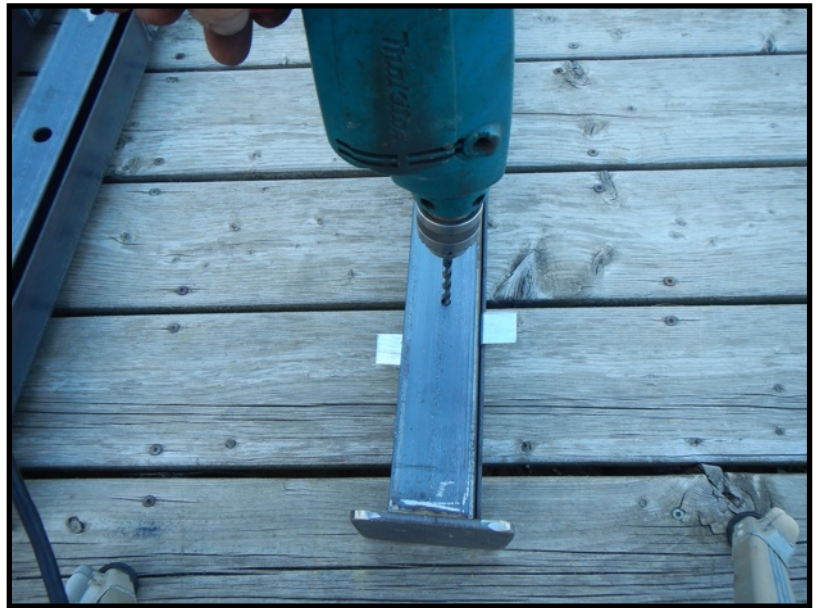
December 2022

are no longer needed afterward.

It is a good practice to mark each leg with each tube as there are slight differences between one leg and the others.

Once the holes have been made, verify the the pins goes in each of the increment easily.

4- How to operate the adjustable legs.



To increase or lower the height of the tripod, remove the pin and lift the tube, the leg remains on the ground. Put the pin in the hole that suits your need.

5- Warranty and disclaimer

This tool is garanty for a five year period against breakage of it's components. Contact Pierre Ménard at vispieux@gmail.com for a refund. The tool does not need to be shipped back. The manufacturer of this tool can not be responsable to damage of property caused by it's use or malfunction. Neither can the manufacturer be held responsable for any injury resulting from the use or malfunction of this tool. By buying this tool, the buyer agrees to these terms

If the buyer do not agree with these terms, write to Pierre Ménard at vispieux@gmail.com for a full refund.

